

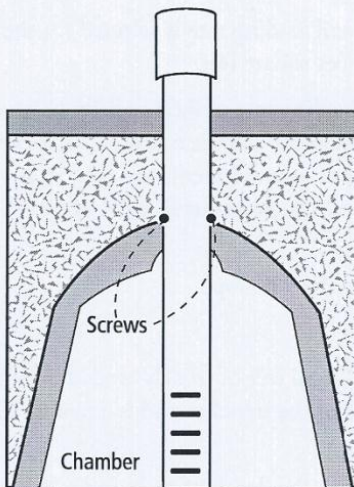
Inspection Port and Clean Out

Inspection Port

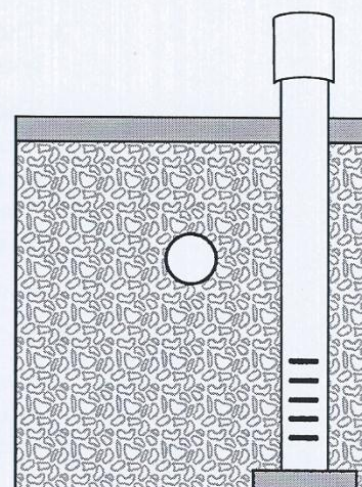
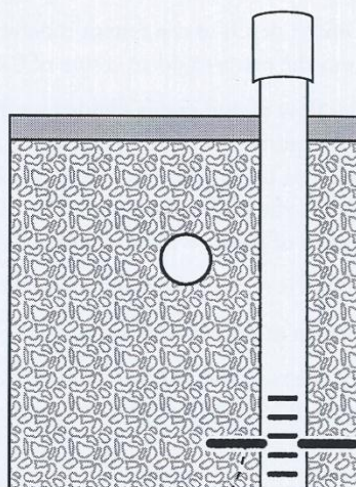
An inspection port is a vertical pipe at least 4 inches in diameter that can be installed in your sewer disposal. These devices are really useful because, by looking into the riser, we can see the level of the wastewater in your drainfield, and determine how well it is working. If the drainfield is full and doesn't go down, this can be a sign of failure or overloading.



Chamber Installation



Rock and Pipe Installation

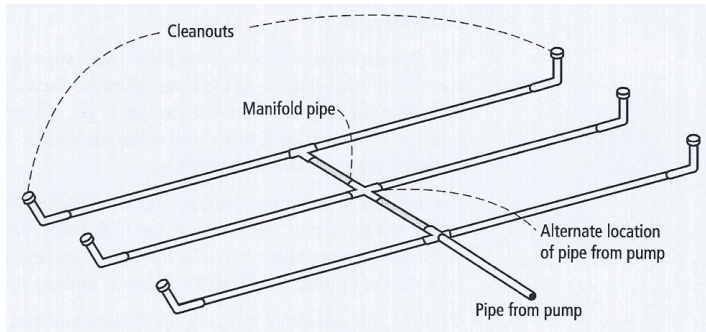


Rebar or T

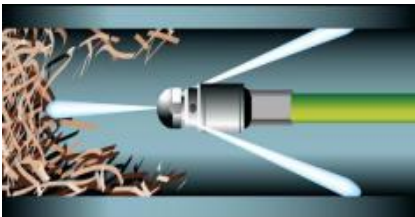
Toilet flange

Clean out

A clean out is used in any pressurized system. This device allows access to every pipe in order to check the system for proper operation and to clean the **plugged perforation**.



A long sweep 90 or 2 x 45 elbow can be used. Do not use short 90; some cleaning instruments (hydro-jet) won't be able to go through.



Clean outs can be hidden by a valve box to increase the aesthetics of your system.

